



**PRIMARY
ALERT**
SYSTEMS



Primary Alert Safe Owner's Manual



Primary Alert Systems, LLC | support@primaryalertsystems.com

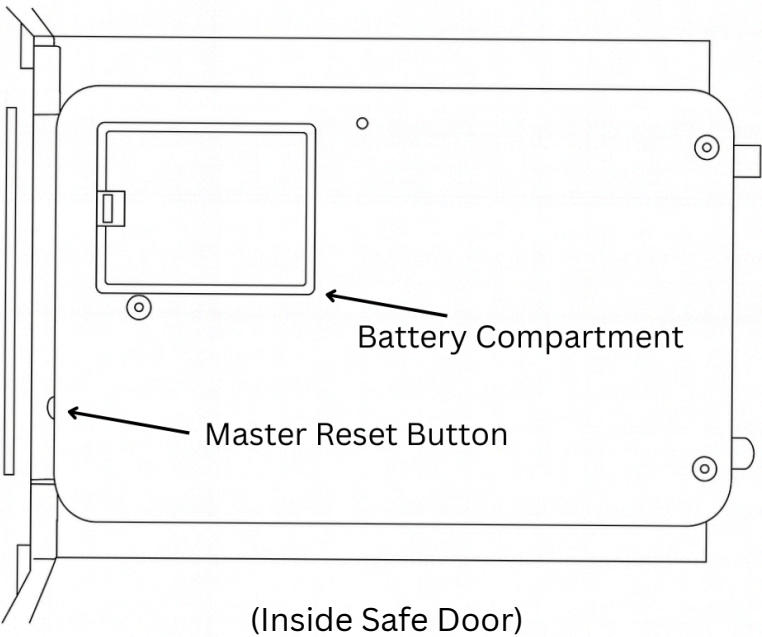
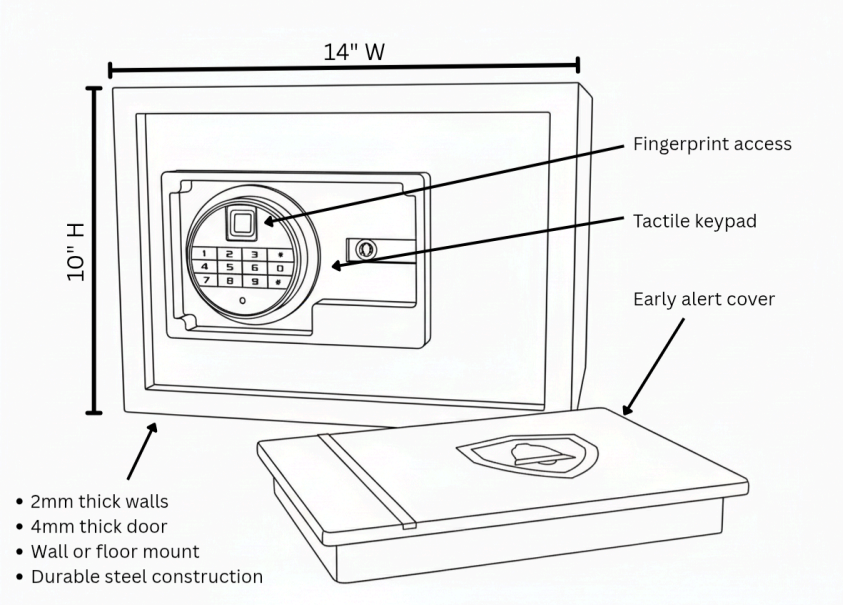
Primary Alert Safe – Owner's Manual Fingerprint, Keypad, and Sensor-Equipped Cover

Introduction

Thank you for choosing the Primary Alert Safe. This innovative security solution combines a robust steel safe, advanced biometric and keypad access, and a patented sensor-equipped cover designed to provide early alerts the moment the safe is accessed. Engineered for reliability, speed, and awareness, the Primary Alert Safe helps protect firearms, medications, valuables, and critical-response tools by not only securing them, but also notifying you instantly when they are accessed.

This manual provides clear, step-by-step instructions for setup, operation, customization, and troubleshooting of both the safe and the alerting cover. Whether you are using it in a home, business, educational setting, or high-security facility, this guide ensures you get the maximum performance, safety, and peace of mind from your Primary Alert Safe.

Please read this manual in full before installation and keep it for future reference.



What's Included

1 - Safe

1 - Primary Alert Cover

2 - Safe Keys

1 - Sensor reset pin (*on keyring with keys*)

4 - Mounting Bolts

1 - Battery Backup pack

1 - Internal Shelf

1 - Felt Lining

Getting Started

- Use supplied keys to open safe for first time.
- Turn Dial around keypad clockwise to unlock
- Turn Dial around keypad counter-clockwise to lock
- Install 4 × AA alkaline batteries inside safe door.
- Powers keypad/fingerprint, locking system, sensor-equipped cover.
- ⚠ Always use new, high-quality AA alkaline batteries; replace all four at once.
- **Keypad Indicator Lights:**
 - Yellow – Input Indicator
 - Red – Low-Battery warning
 - Green – Safe unlocked
- **Factory Settings:**
 - Customer code: 1234
 - Master code: 123456
 - Fingerprint database: Empty

No fingerprint can unlock until registered.

Entering and resetting Codes and Fingerprints

- Change Customer Code: Press master reset button inside door → enter new code → press # → success beep
- Change Master Code: Enter 00 → press master reset button inside door → enter new code → press # → success beep
- Register Fingerprint: Press master reset button inside door → scan finger 3 times → long beep = success
- Clear Fingerprints & Reset: Hold master reset button inside door for 5 seconds → long beep = factory defaults restored

Opening the Safe (Standard Mode)

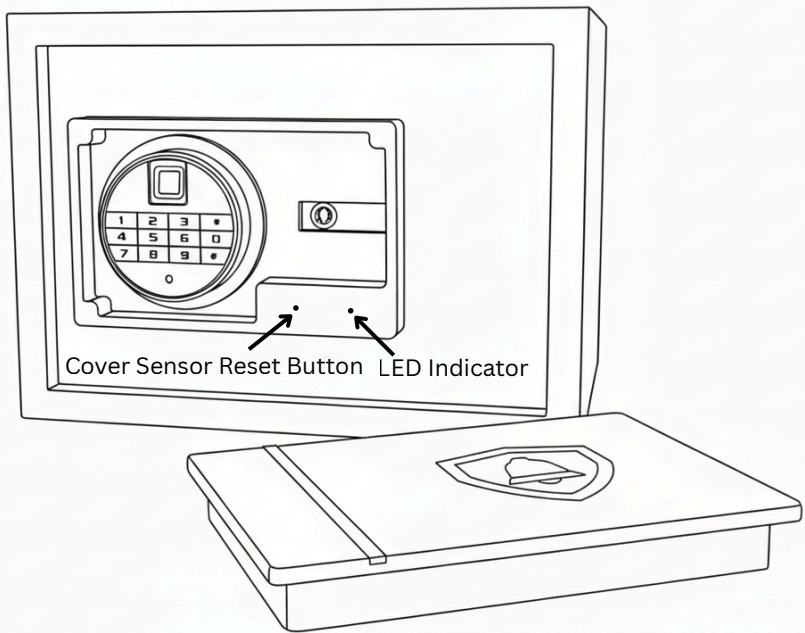
- **Keycode Opening:**
 1. Enter a valid 4–8 digit keycode
 2. Press #
 3. Buzzer beeps twice, green light turns on indicating successful input, and safe unlocks for 6 seconds
- **Fingerprint Opening:**
 1. Place registered finger on scanner
 2. Buzzer beeps twice, green light turns on indicating successful input, and safe unlocks for 6 seconds

Security Features

- Error Alarm: 3 wrong attempts in a row or 5 total → 20 sec buzzer + horn (The alarm can be disarmed by entering a correct fingerprint or code)
- Silent Mode: Enter 00 then press * to activate / Enter 66 then press* to deactivate
- Vibration Alarm: Press * to arm; triggered if safe moves/shaken
- Low-Battery Warning:
 - <4.5V: red light on → replace batteries soon
 - <4.3V: fingerprint disabled, red light flashes; password still works

Advanced Feature: Dual Mode

- Activate/Deactivate: Hold 1 and press master reset button while still holding 1 → long beep confirms Dual Mode activated
- Use Dual Mode:
 - Enter code first followed by fingerprint within 10 seconds
 - Scan fingerprint first followed by entering code within 10 seconds



Cover Sensor Reset Button LED Indicator

Sensor-Equipped Cover – Setup & Operation

Before You Begin

- Download and install a supported smart home app on your phone, such as Tuya, Geeni, Smart Life or a compatible alternative.
- Insert four (4) new AA alkaline batteries into the Primary Alert Safe battery compartment.
 - *Note: The cover sensor is powered through the Safe's battery pack and does not require separate batteries.*
- Ensure your Wi-Fi network is enabled and broadcasting at 2.4 GHz. The sensor will not connect to 5 GHz networks.
- Place the Safe within 30 feet (9 meters) of your Wi-Fi router for best performance. Avoid thick walls, metal barriers, or high interference areas.
- Confirm your phone is connected to the same 2.4 GHz Wi-Fi network and that Bluetooth is enabled.

Pairing the Sensor

- Locate the cover sensor reset button on the sensor housing (shown in picture).
- Activate the sensor: Using the sensor reset pin (supplied) Press and hold the reset button for approximately 1 second.
- Enter pairing mode: Using the Sensor reset pin (supplied) Press and hold the reset button for an additional 5 seconds until the blue LED indicator begins flashing.
- Open your selected app (Tuya, Geeni, etc.) and follow the “Add Device” → “Contact Sensor” steps.
- If prompted, confirm your Wi-Fi credentials.
- The app will complete the pairing process.
- Once paired, the device will appear in your app as a Contact Sensor.

Normal Operation

- When the Primary Alert Cover is opened or removed, the sensor will trigger an alert notification through the connected app.
- When the cover is closed and secured, the app will indicate a safe/closed status.
- The system may also provide warnings such as Low Battery, Open Door Reminder, or Closing Reminder, depending on app integration.

Battery Backup pack

- The battery backup pack can be used to open the safe in the event that the keys are missing and the internal batteries are dead or not installed
- Insert (4) AA batteries into the pack and plug it into the power input jack on the front of the keypad

Notes & Tips

- Keep your Safe within range of the Wi-Fi router for the most reliable alerts.
- Replace the AA batteries as needed. A low battery warning will appear in the app.
- If pairing fails, repeat the reset and pairing steps.

Technical Specifications (for reference only)

- Although the sensor is powered through the Safe's 4xAA batteries, performance is based on the following module specifications:
- Working Voltage: DC 3V
- Static Current: 30 μ A
- Transmitting Current: 35 mA
- Wireless Protocol: IEEE 802.11 b/g/n 2.4 GHz
- Functions: Open/Close detection, Low battery warning

Troubleshooting Guide

Problem	Cause	Solution
Keypad/Fingerprint not responding	Batteries Depleted	Replace all 4 AA batteries
Password not accepted	Wrong password / dual mode	Retry correct code or enter dual mode sequence
Fingerprint not recognized	Finger not registered / misaligned	Register or place finger correctly
Safe won't open	input error	Wait 20 seconds, enter correct code/fingerprint
Vibration alarm triggers	safe moved	Place on stable surface
Sensor won't power/pair	Battery / reset issue	Check batteries, hold reset for 1-5 seconds
Sensor won't connect	Wi-Fi / distance / interference	Switch to 2.4GHz, move safe closer to Wi-Fi router, retry pairing

Safety & Maintenance:

- Only AA alkaline batteries; replace all together
- Avoid moisture, heat, direct sunlight
- Keep Wi-Fi credentials secure
- Clean with soft, dry cloth only

Customer Support:

Website: www.primaryalertsafes.com
Email: support@primaryalertsafes.com



**PRIMARY
ALERT**
SYSTEMS



Primary Alert Safe Owner's Manual



Primary Alert Systems, LLC | support@primaryalertsystems.com